

Elite Cues and Public Polarization on Transgender Rights

Supplemental Material

Table A-1: Models using pooled data with interaction between ideology, awareness, and year

	Gender-neutral bathrooms	Student protections
Intercept	3.90 (0.37) ^{***}	4.10 (0.32) ^{***}
Ideology	-0.25 (0.10) [*]	-0.17 (0.09) [†]
Political awareness	-0.19 (0.50)	0.45 (0.43)
2016 survey	-1.25 (0.53) [*]	-0.98 (0.52) [†]
Ideology × awareness	0.04 (0.14)	-0.03 (0.13)
Ideology × 2016	0.34 (0.16) [*]	0.24 (0.16)
Awareness × 2016	1.73 (0.73) [*]	1.54 (0.71) [*]
Ideology × awareness × 2016	-0.53 (0.21) [*]	-0.45 (0.22) [*]
Party ID	-0.09 (0.02) ^{***}	-0.08 (0.02) ^{***}
Religiosity	-0.09 (0.04) [*]	-0.08 (0.03) [*]
Age (decades)	-0.44 (0.19) [*]	-1.01 (0.19) ^{***}
Hispanic	0.05 (0.12)	-0.04 (0.11)
Black	0.11 (0.10)	-0.12 (0.11)
Female	0.33 (0.06) ^{***}	0.29 (0.06) ^{***}
McFadden's pseudo- R^2	.21	.21
F statistic	28.65	28.58
N	1,430	1,422

*** $p < 0.001$, ** $p < 0.01$, * $p < 0.05$, † $p < 0.1$

Table A-2: Replicating Table 2 with ordered logit estimator

	2015		2016		
	Gender-neutral bathrooms	Student protections	Gender-neutral bathrooms	Student protections	Bathroom access
Ideology	-0.65 (0.25)**	-0.37 (0.24)	0.24 (0.23)	0.13 (0.29)	0.34 (0.27)
Political awareness	-0.93 (1.22)	1.97 (1.21)	3.38 (1.15)**	3.94 (1.53)*	3.67 (1.35)**
Ideology × awareness	0.19 (0.34)	-0.33 (0.34)	-1.05 (0.35)**	-0.93 (0.47)*	-1.10 (0.39)**
Party ID	-0.20 (0.05)***	-0.10 (0.05)*	-0.13 (0.06)*	-0.23 (0.07)***	-0.21 (0.06)***
Religiosity	-0.28 (0.11)*	-0.19 (0.10)	-0.13 (0.09)	-0.10 (0.10)	-0.22 (0.10)*
Age (decades)	-0.36 (0.54)	-1.70 (0.55)**	-0.76 (0.53)	-2.28 (0.56)***	1.05 (0.55)
Hispanic	-0.44 (0.32)	-0.08 (0.35)	0.58 (0.35)	0.03 (0.35)	-0.00 (0.38)
Black	-0.02 (0.28)	0.12 (0.35)	0.55 (0.34)	-0.49 (0.36)	-0.70 (0.36)*
Female	0.90 (0.17)***	0.79 (0.18)***	0.48 (0.19)**	0.35 (0.19)	0.57 (0.19)**
Threshold 1	-5.22 (0.92)***	-4.22 (0.89)***	-0.88 (0.89)	-2.52 (1.13)*	-0.25 (1.00)
Threshold 2	-3.64 (0.91)***	-3.18 (0.88)***	-0.04 (0.88)	-1.65 (1.12)	0.95 (1.00)
Threshold 3	-1.57 (0.90)	-0.99 (0.87)	1.56 (0.88)	-0.23 (1.11)	1.74 (1.01)
N	721	740	709	682	703
F statistic	15.2	13.6	11.3	13.7	11.3

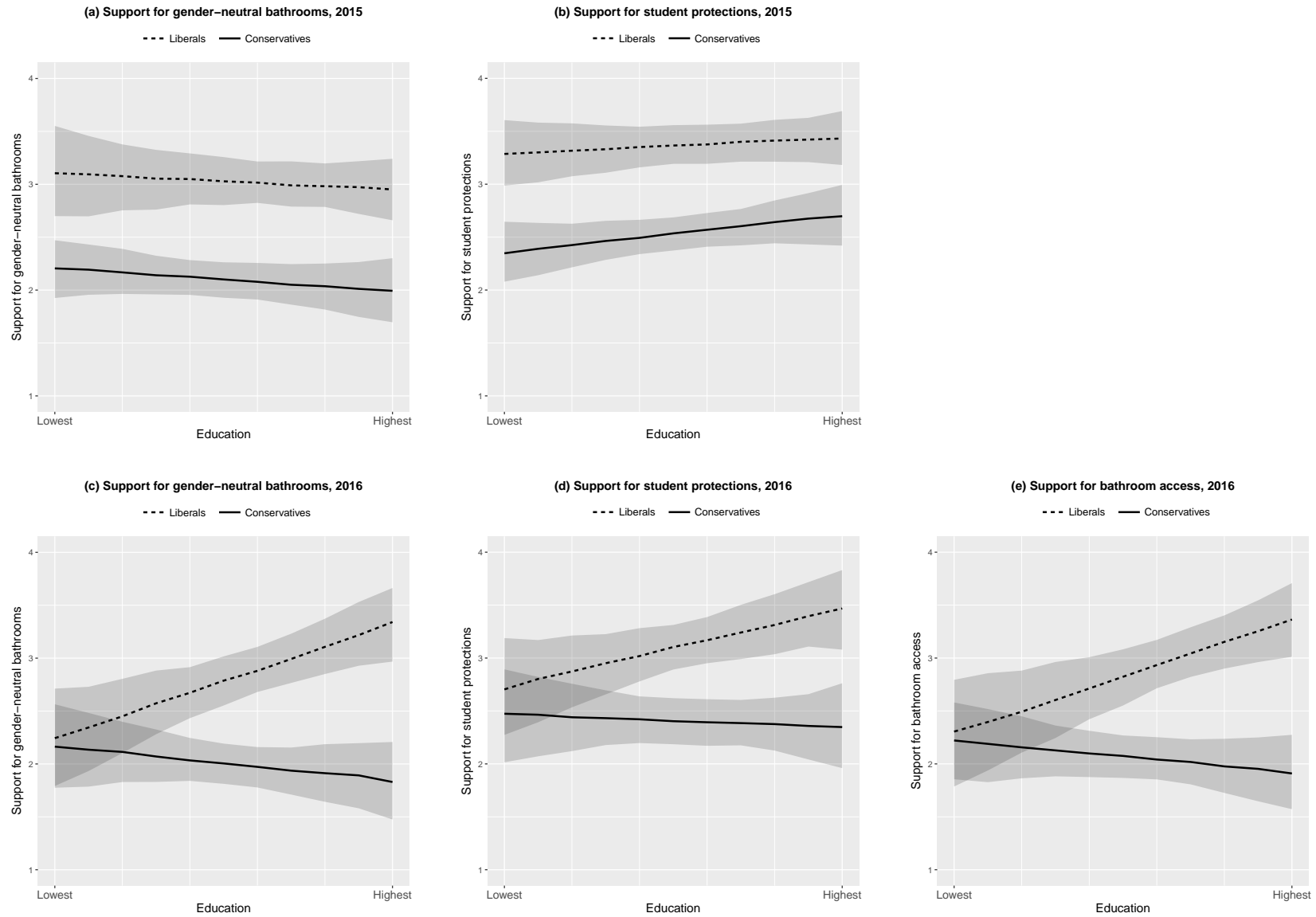
*** $p < 0.001$, ** $p < 0.01$, * $p < 0.05$, † $p < 0.1$

Table A-3: Replicating Table 2 with education instead of awareness variable

	2015		2016		
	Gender-neutral bathrooms	Student protections	Gender-neutral bathrooms	Student protections	Bathroom access
Intercept	3.90 (0.27)***	4.20 (0.24)***	2.78 (0.36)***	3.97 (0.39)***	2.49 (0.39)***
Ideology	-0.22 (0.08)**	-0.23 (0.07)***	-0.02 (0.09)	-0.06 (0.10)	-0.02 (0.10)
Education	-0.15 (0.40)	0.10 (0.31)	1.44 (0.47)**	0.97 (0.49)*	1.41 (0.50)**
Ideology × education	-0.01 (0.12)	0.05 (0.10)	-0.35 (0.14)*	-0.22 (0.15)	-0.34 (0.14)*
Party ID	-0.09 (0.02)***	-0.06 (0.02)*	-0.09 (0.03)**	-0.14 (0.03)***	-0.13 (0.03)***
Religiosity	-0.12 (0.05)*	-0.10 (0.04)*	-0.06 (0.05)	-0.08 (0.05)†	-0.11 (0.06)†
Age (decades)	-0.28 (0.24)	-0.73 (0.24)**	-0.52 (0.29)†	-1.15 (0.29)***	0.74 (0.31)*
Hispanic	-0.18 (0.14)	-0.10 (0.14)	0.33 (0.18)†	-0.03 (0.18)	0.08 (0.21)
Black	-0.02 (0.13)	-0.03 (0.14)	0.24 (0.18)	-0.26 (0.17)	-0.38 (0.19)*
Female	0.39 (0.08)***	0.37 (0.08)***	0.27 (0.10)**	0.21 (0.10)*	0.30 (0.11)**
McFadden's pseudo- R^2	.25	.22	.20	.23	.19
F statistic	23.37	20.24	19.05	23.43	21.39
N	726	744	711	684	705

*** $p < 0.001$, ** $p < 0.01$, * $p < 0.05$, † $p < 0.1$

Figure A-1: Predicted support for transgender rights in 2015 and 2016, by education and ideology



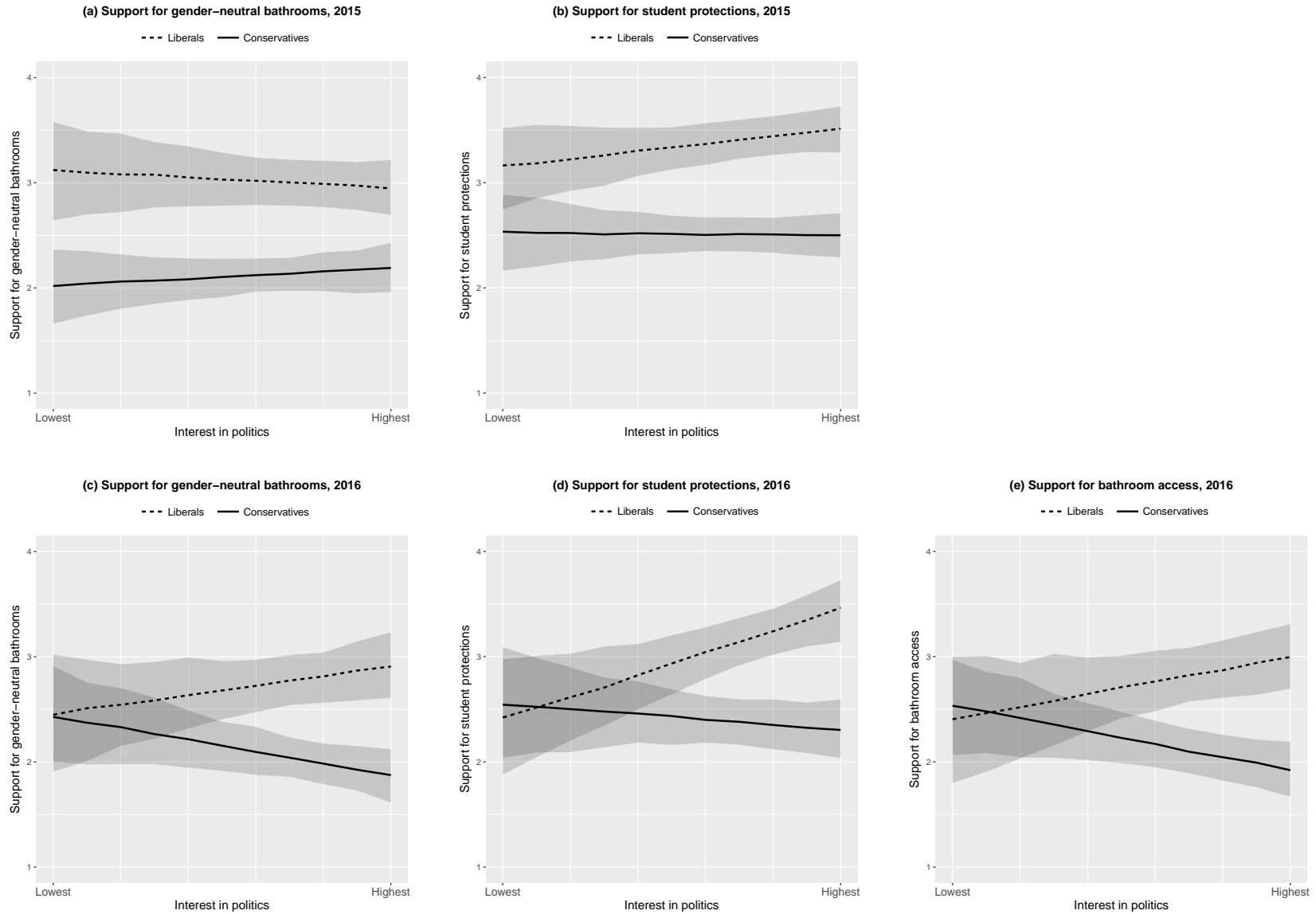
Note: Replicates the plots in Figure 3 using education as political awareness measure. Simulated from models in Table A-3. For each simulation, all other numeric values are held to their mean in that year's survey; Black, Hispanic, and female are set to zero.

Table A-4: Replicating Table 2 with interest instead of awareness variable

	2015		2016		
	Gender-neutral bathrooms	Student protections	Gender-neutral bathrooms	Student protections	Bathroom access
Intercept	4.01 (0.33) ^{***}	3.95 (0.29) ^{***}	3.01 (0.42) ^{***}	3.54 (0.45) ^{***}	2.57 (0.47) ^{***}
Ideology	-0.27 (0.09) ^{**}	-0.16 (0.08) [†]	-0.00 (0.11)	0.03 (0.11)	0.03 (0.12)
Interest	-0.25 (0.38)	0.45 (0.33)	0.71 (0.48)	1.36 (0.48) ^{**}	0.90 (0.52) [†]
Ideology × interest	0.08 (0.11)	-0.09 (0.10)	-0.25 (0.13) [†]	-0.32 (0.15) [*]	-0.30 (0.15) [*]
Party ID	-0.10 (0.02) ^{***}	-0.05 (0.02) [†]	-0.09 (0.03) ^{**}	-0.12 (0.03) ^{***}	-0.12 (0.04) ^{***}
Religiosity	-0.13 (0.05) ^{**}	-0.09 (0.04) [†]	-0.07 (0.05)	-0.07 (0.05)	-0.11 (0.06) [†]
Age (decades)	-0.29 (0.24)	-0.82 (0.25) ^{**}	-0.51 (0.29) [†]	-1.29 (0.29) ^{***}	0.70 (0.31) [*]
Hispanic	-0.18 (0.14)	-0.10 (0.14)	0.26 (0.19)	-0.05 (0.17)	0.01 (0.20)
Black	-0.02 (0.12)	-0.04 (0.14)	0.26 (0.18)	-0.21 (0.17)	-0.38 (0.20) [†]
Female	0.39 (0.08) ^{***}	0.37 (0.08) ^{***}	0.28 (0.10) ^{**}	0.22 (0.10) [*]	0.31 (0.11) ^{**}
McFadden's pseudo- R^2	.24	.22	.20	.25	.19
F statistic	22.53	19.80	14.24	24.04	16.00
N	724	743	713	686	707

*** $p < 0.001$, ** $p < 0.01$, * $p < 0.05$, † $p < 0.1$

Figure A-2: Predicted support for transgender rights in 2015 and 2016, by interest in politics and ideology



Note: Replicates the plots in Figure 3 using interest in politics as political awareness measure. Simulated from models in Table A-4. For each simulation, all other numeric values are held to their mean in that year's survey; Black, Hispanic, and female are set to zero.

Table A-5: Replicating Table 2 with interaction between education and interest instead of awareness variable

	2015		2016		
	Gender-neutral bathrooms	Student protections	Gender-neutral bathrooms	Student protections	Bathroom access
Intercept	4.32 (0.57) ^{***}	4.53 (0.43) ^{***}	2.71 (0.75) ^{***}	3.16 (0.81) ^{***}	2.87 (0.84) ^{***}
Ideology	-0.32 (0.15) [*]	-0.33 (0.12) ^{**}	0.07 (0.20)	0.17 (0.22)	-0.04 (0.22)
Interest	-0.65 (0.67)	-0.41 (0.53)	0.05 (0.98)	1.43 (0.94)	-0.53 (1.05)
Education	-0.63 (1.00)	-1.39 (0.69) [*]	0.87 (1.27)	1.02 (1.38)	-0.69 (1.43)
Ideology × interest	0.16 (0.19)	0.12 (0.16)	-0.12 (0.27)	-0.41 (0.28)	0.02 (0.28)
Ideology × education	0.05 (0.29)	0.46 (0.22) [*]	-0.24 (0.36)	-0.36 (0.40)	0.15 (0.40)
Interest × education	0.82 (1.12)	1.90 (0.83) [*]	0.75 (1.61)	-0.55 (1.59)	2.68 (1.70)
Ideology × interest × education	-0.13 (0.34)	-0.52 (0.27) [†]	-0.14 (0.44)	0.29 (0.46)	-0.62 (0.47)
Party ID	-0.09 (0.02) ^{***}	-0.05 (0.02) [*]	-0.08 (0.03) ^{**}	-0.12 (0.03) ^{***}	-0.12 (0.04) ^{**}
Religiosity	-0.12 (0.05) ^{**}	-0.10 (0.04) [*]	-0.06 (0.05)	-0.07 (0.05)	-0.09 (0.06) [†]
Age (decades)	-0.31 (0.24)	-0.81 (0.25) ^{***}	-0.48 (0.30)	-1.28 (0.29) ^{***}	0.70 (0.31) [*]
Hispanic	-0.17 (0.14)	-0.09 (0.14)	0.34 (0.18) [†]	-0.02 (0.18)	0.10 (0.21)
Black	-0.03 (0.13)	-0.04 (0.14)	0.25 (0.18)	-0.20 (0.17)	-0.39 (0.19) [*]
Female	0.39 (0.08) ^{***}	0.38 (0.08) ^{***}	0.26 (0.10) [*]	0.21 (0.10) [*]	0.28 (0.11) ^{**}
McFadden's pseudo- R^2	.25	.23	.21	.25	.21
F-statistic	16.05	16.34	15.29	20.18	22.60
N	721	740	709	682	703

*** $p < 0.001$, ** $p < 0.01$, * $p < 0.05$, † $p < 0.1$

Table A-6: Simulated values from Table A-5

		2015		2016		
		Gender-neutral bathrooms	Student protections	Gender-neutral bathrooms	Student protections	Bathroom access
∞	Least aware conservatives	1.98 [1.41, 2.52]	2.09 [1.57, 2.63]	2.40 [1.51, 3.34]	2.85 [1.87, 3.84]	2.37 [1.48, 3.63]
	Most aware conservatives	1.90 [1.53, 2.25]	2.46 [2.11, 2.82]	1.57 [1.13, 2.03]	2.36 [1.88, 2.89]	1.59 [1.21, 1.97]
	Least aware liberals	3.24 [2.42, 4.04]	3.42 [2.81, 3.95]	2.12 [1.09, 3.15]	2.20 [1.06, 3.29]	2.58 [1.43, 3.63]
	Most aware liberals	2.86 [2.55, 3.18]	3.54 [3.28, 3.81]	3.30 [2.93, 3.72]	3.61 [3.26, 3.97]	3.57 [3.15, 3.96]

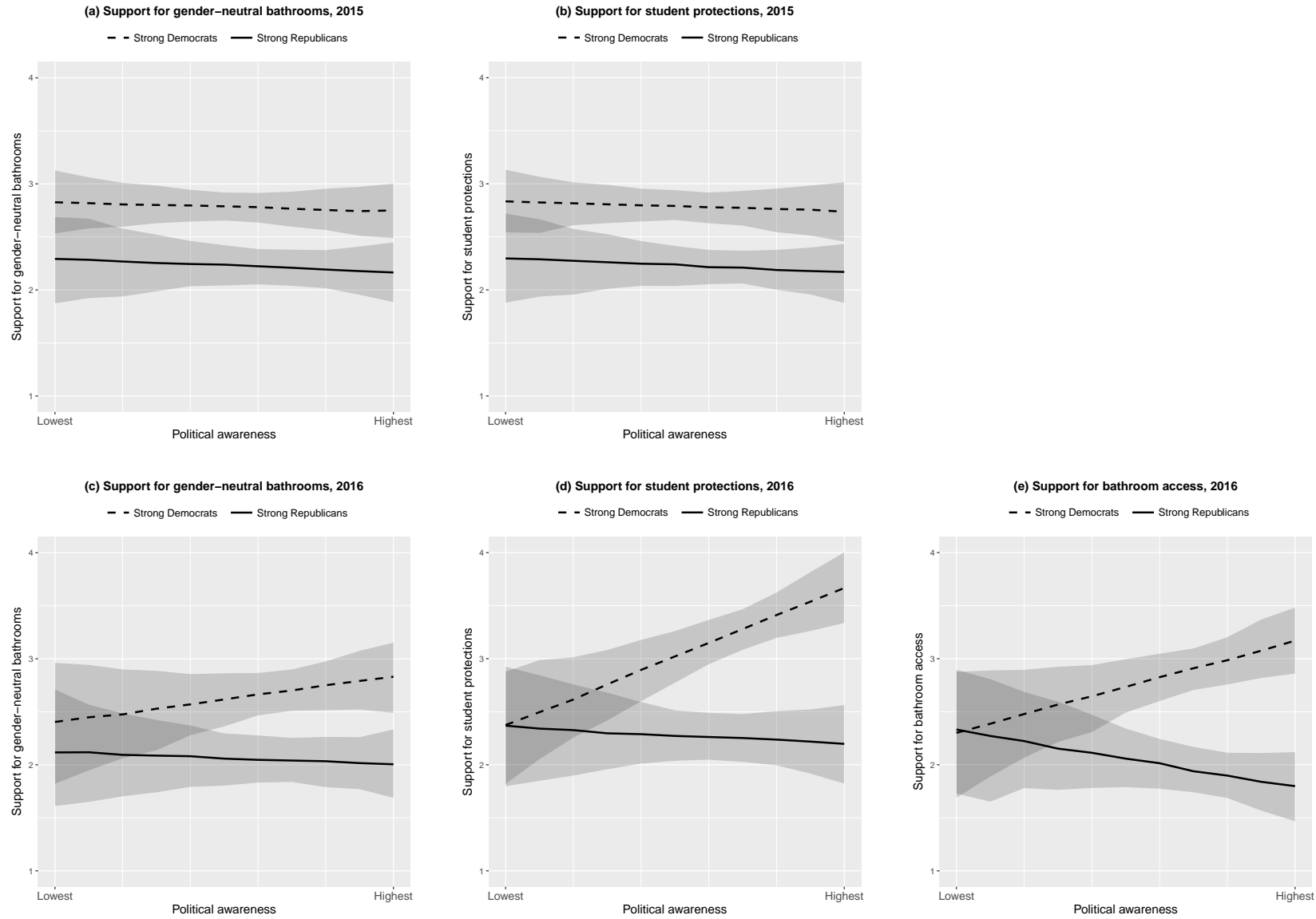
Note: Simulated values and 95% confidence intervals from models in Table A-5. “Least-aware”=both education and interest in politics set to 0; “Most-aware”=both education and interest in politics set to 1. All control variables set to mean or modal value.

Table A-7: Replicating Table 2 with party identity instead of ideology interaction

	2015		2016		
	Gender-neutral bathrooms	Student protections	Gender-neutral bathrooms	Student protections	Bathroom access
Intercept	3.87 (0.24) ^{***}	3.80 (0.22) ^{***}	3.23 (0.39) ^{***}	3.64 (0.38) ^{***}	2.64 (0.41) ^{***}
Party ID	-0.09 (0.05) [†]	0.04 (0.06)	-0.05 (0.08)	-0.00 (0.08)	0.00 (0.09)
Political awareness	-0.09 (0.26)	0.68 (0.23) ^{**}	0.44 (0.42)	1.29 (0.38) ^{***}	0.87 (0.41) [*]
Party ID × awareness	-0.01 (0.08)	-0.15 (0.08) [†]	-0.09 (0.11)	-0.24 (0.11) [*]	-0.23 (0.12) [*]
Ideology	-0.22 (0.05) ^{***}	-0.20 (0.04) ^{***}	-0.17 (0.05) ^{***}	-0.14 (0.05) ^{**}	-0.15 (0.06) ^{**}
Religiosity	-0.12 (0.05) [*]	-0.09 (0.04) [*]	-0.08 (0.05)	-0.08 (0.05)	-0.12 (0.06) [*]
Age (decades)	-0.26 (0.24)	-0.74 (0.24) ^{**}	-0.53 (0.30) [†]	-1.28 (0.28) ^{***}	0.70 (0.31) [*]
Hispanic	-0.19 (0.14)	-0.10 (0.14)	0.27 (0.19)	-0.02 (0.18)	0.02 (0.21)
Black	-0.02 (0.13)	-0.05 (0.14)	0.27 (0.18)	-0.22 (0.17)	-0.37 (0.19) [†]
Female	0.39 (0.08) ^{***}	0.36 (0.08) ^{***}	0.29 (0.10) ^{**}	0.21 (0.10) [*]	0.31 (0.11) ^{**}
McFadden's pseudo- R^2	.24	.22	.19	.25	.19
F statistic	22.86	22.52	13.82	26.02	19.52
N	721	740	709	682	703

*** $p < 0.001$, ** $p < 0.01$, * $p < 0.05$, † $p < 0.1$

Figure A-3: Predicted support for transgender rights in 2015 and 2016, by political awareness and party identity



10

Note: Replicates the plots in Figure 3 using party identity rather than ideology as key political predisposition. Simulated from models in Table A-7. For each simulation, all other numeric values are held to their mean in that year's survey; Black, Hispanic, and female are set to zero.

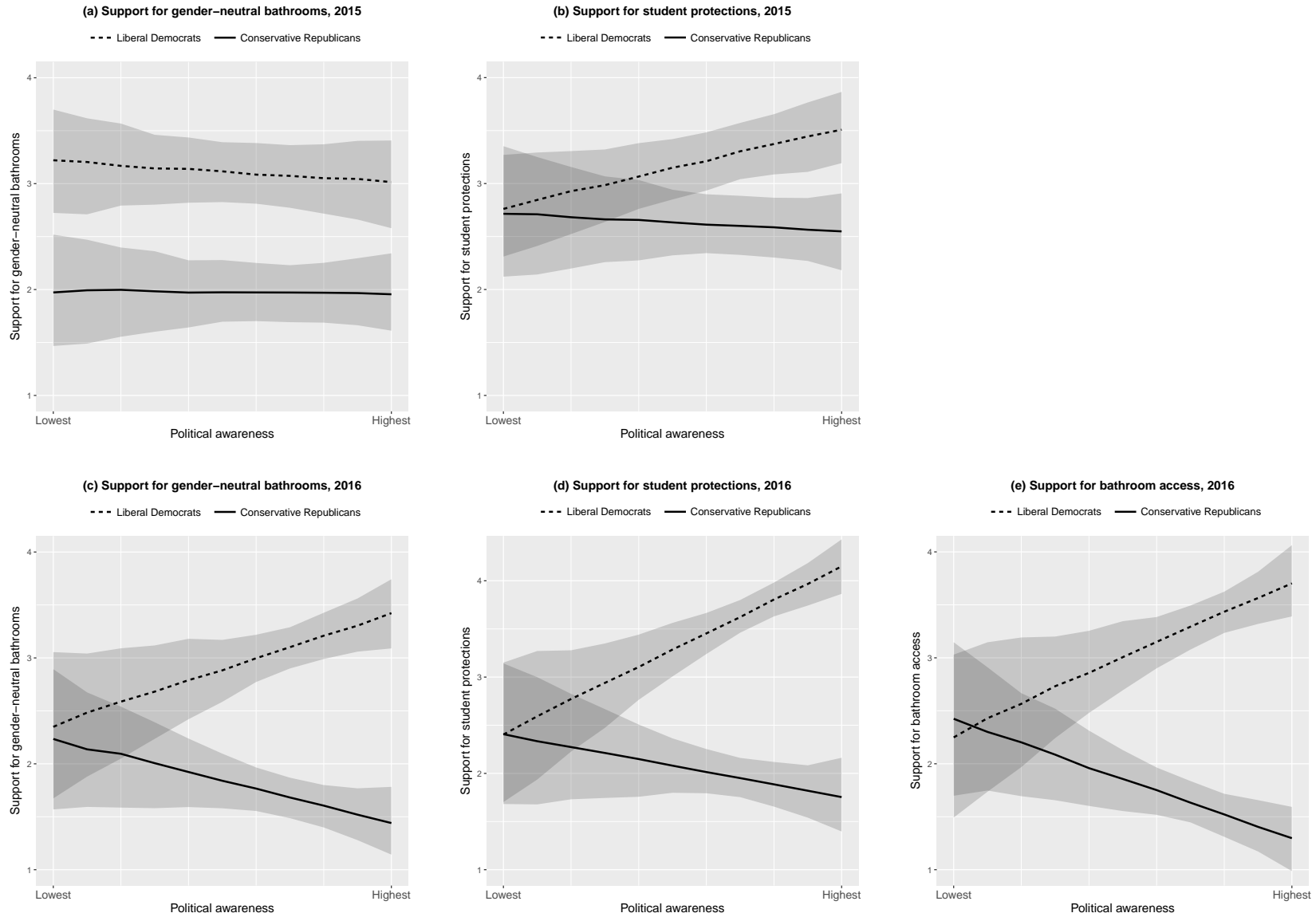
Table A-8: Replicating Table 2 with ideology/party identity index

	2015		2016		
	Gender-neutral bathrooms	Student protections	Gender-neutral bathrooms	Student protections	Bathroom access
Intercept	3.71 (0.28) ^{***}	3.57 (0.27) ^{***}	2.69 (0.40) ^{***}	3.20 (0.43) ^{***}	2.12 (0.44) ^{***}
Ideology/party identity	-1.50 (0.47) ^{**}	-0.52 (0.49)	-0.14 (0.61)	-0.01 (0.68)	0.14 (0.66)
Political awareness	-0.14 (0.35)	0.80 (0.33) [*]	1.04 (0.47) [*]	1.73 (0.48) ^{***}	1.43 (0.50) ^{**}
Ideology/party identity × awareness	0.14 (0.63)	-0.95 (0.66)	-1.83 (0.80) [*]	-2.38 (0.91) ^{**}	-2.56 (0.86) ^{**}
Religiosity	-0.13 (0.05) ^{**}	-0.10 (0.04) [*]	-0.07 (0.05)	-0.07 (0.05)	-0.10 (0.06) [†]
Age (decades)	-0.31 (0.24)	-0.85 (0.24) ^{***}	-0.58 (0.29) [†]	-1.26 (0.28) ^{***}	0.68 (0.31) [*]
Hispanic	-0.19 (0.14)	-0.10 (0.14)	0.28 (0.19)	0.01 (0.18)	0.05 (0.21)
Black	-0.05 (0.13)	-0.10 (0.14)	0.24 (0.17)	-0.20 (0.17)	-0.37 (0.19) [*]
Female	0.38 (0.08) ^{***}	0.35 (0.08) ^{***}	0.28 (0.10) ^{**}	0.21 (0.10) [*]	0.30 (0.11) ^{**}
McFadden's pseudo- R^2	.24	.21	.19	.25	.20
F statistic	26.06	24.63	18.69	31.83	26.60
N	721	740	709	682	703

*** $p < 0.001$, ** $p < 0.01$, * $p < 0.05$, † $p < 0.1$

Note: Ideology/party identity is an average of respondents' ideology and party identity, rescaled to range from 0 (most liberal/Democratic) to 1 (most conservative/Republican).

Figure A-4: Predicted support for transgender rights in 2015 and 2016, by political awareness and ideology/party identity index



Note: Replicates the plots in Figure 3 using average of ideology and party identity as key political predisposition. Simulated from models in Table A-8. For each simulation, all other numeric values are held to their mean in that year's survey; Black, Hispanic, and female are set to zero.

Table A-9: Sample demographics, compared to population parameters

	Population parameters	2015 sample	2016 sample
Gender			
Male	48.3%	48.9%	47.7%
Female	51.7%	51.1%	52.3%
Age			
18-24	13.1%	13.0%	12.8%
25-34	17.5%	16.3%	16.1%
35-44	16.9%	16.3%	17.0%
45-54	18.1%	18.4%	18.0%
55-64	16.3%	16.9%	17.4%
65+	18.1%	19.0%	18.7%
Education			
HS graduate or less	41.2%	40.3%	39.4%
Some college/Assoc. degree	31.5%	31.3%	32.5%
College graduate	27.3%	28.4%	28.2%
Race/Ethnicity			
Non-Hispanic White	65.9%	67.7%	65.5%
Non-Hispanic Black	11.7%	11.5%	12.1%
Hispanic	15.0%	13.9%	14.3%
Non-Hispanic Other	7.4%	6.9%	8.1%
Region			
Northeast	18.2%	18.3%	17.2%
Midwest	21.5%	21.6%	21.8%
South	37.5%	37.2%	38.4%
West	22.8%	22.8%	22.7%

Note: Population parameters from the US Census Bureau's 2013 American Community Survey data. Sample demographics calculated using weighted data. Source: PSRAI.